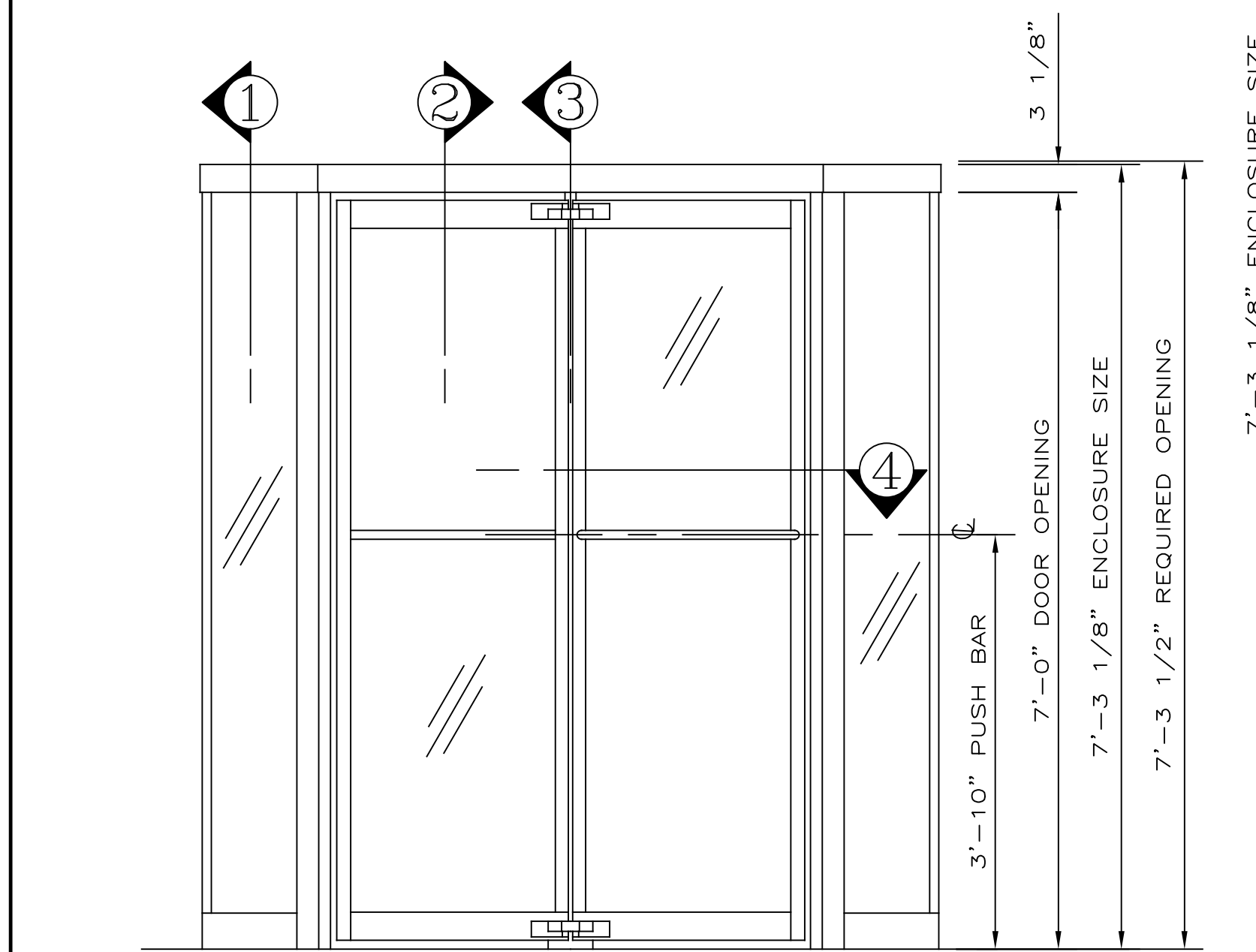
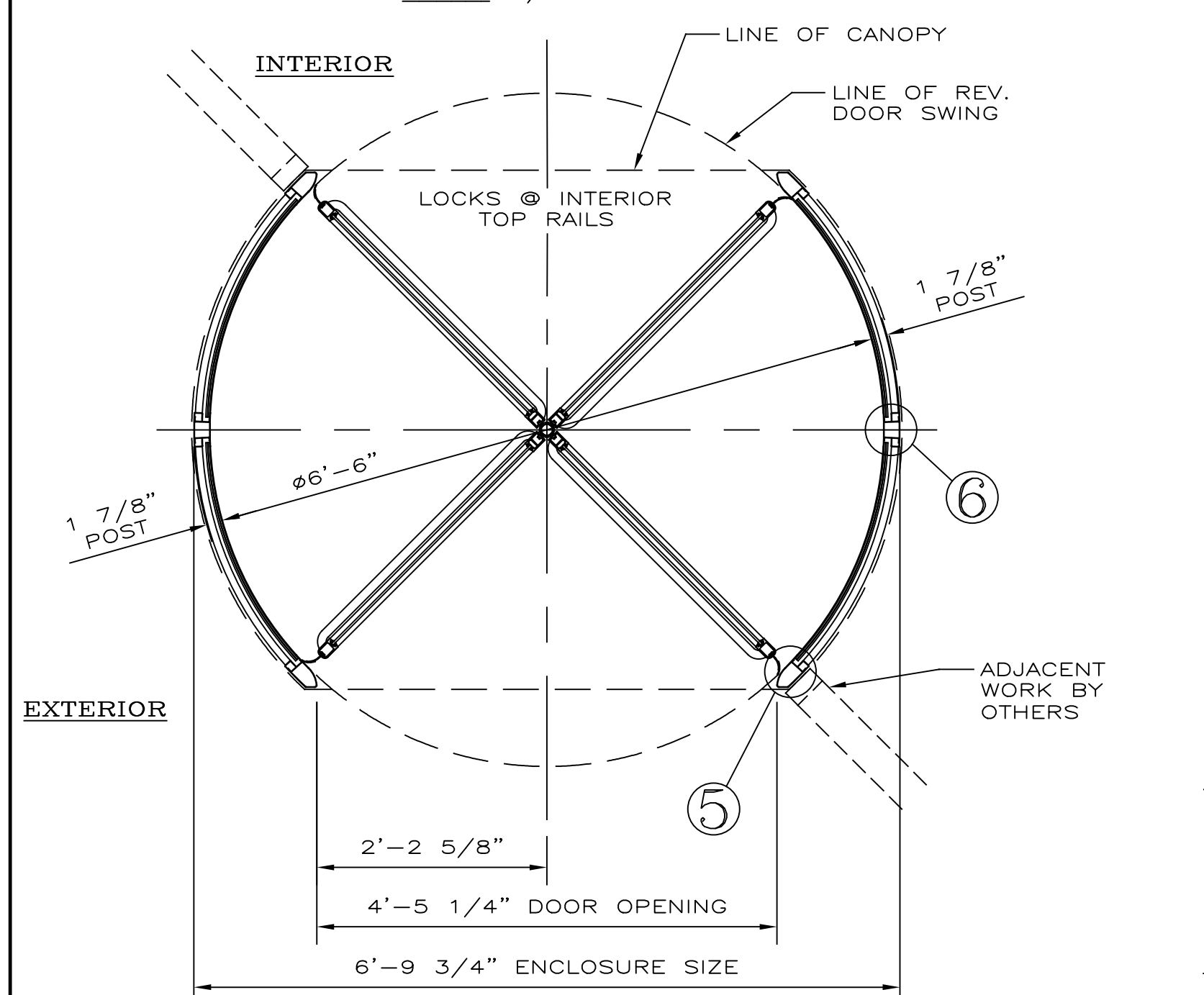


**CANOPY REINFORCING PLAN**  
SCALE: 3/4" = 1'-0"

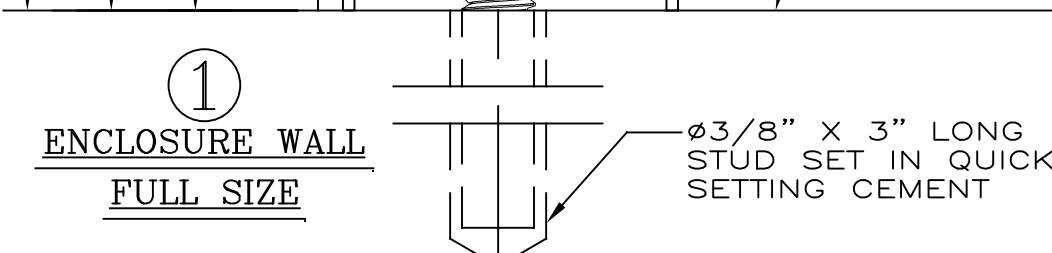
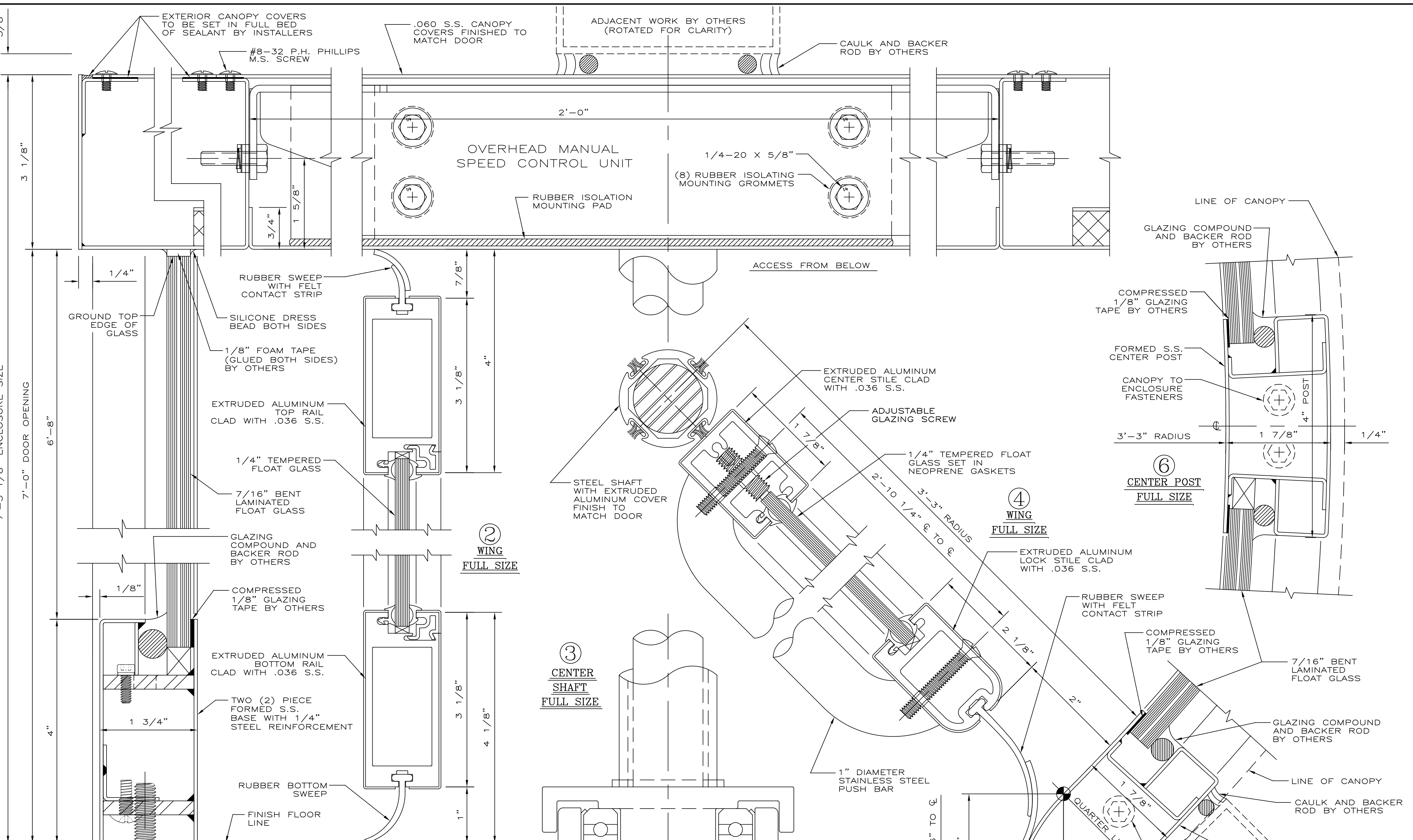


**ELEVATION**  
NOTE: FLOOR UNDER REV. DOOR MUST BE LEVEL  
ONE (1) DOOR REQUIRED THUS  
SCALE: 3/4" = 1'-0"



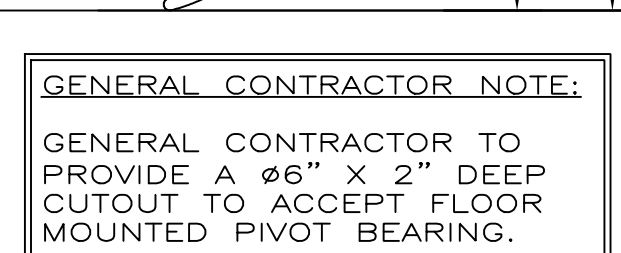
NOTE: CANOPY DIA. OF 6'-10 1/4"  
NOTE: REQUIRED ROUGH OPENING OF 6'-10 1/4"

**PLAN**  
SCALE: 3/4" = 1'-0"



**GENERAL CONTRACTOR NOTE:**  
GENERAL CONTRACTOR TO PROVIDE A #6\"/>

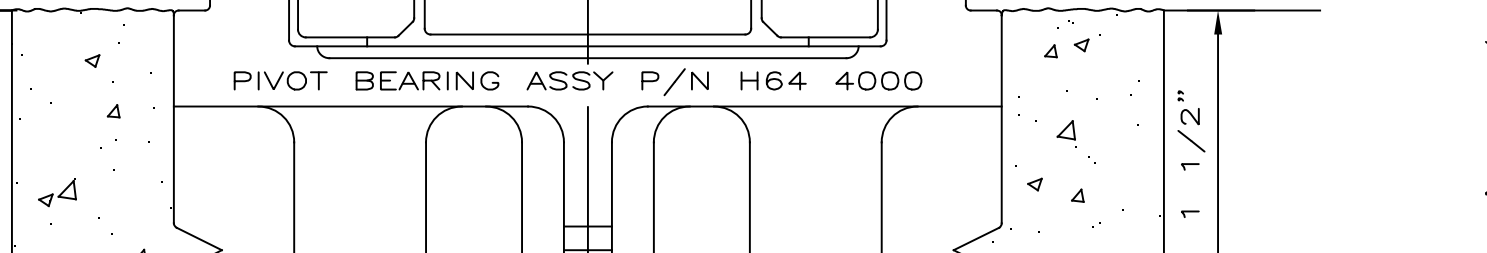
**GENERAL NOTES**  
CONTRACTOR SHOULD CHECK & TAKE NOTE OF ALL DIMENSIONS AS CRANE (CRANE REVOLVING DOOR) ASSUMES NO RESPONSIBILITY BEYOND MANUFACTURING IN ACCORDANCE WITH THE DIMENSIONS SHOWN ON SHOP DRAWINGS.  
APPROVAL INDICATES THAT THIS SHOP DRAWING HAS BEEN CHECKED AND THAT YOU AUTHORIZE US TO FABRICATE MATERIALS AS SHOWN HERE-IN.  
REVOLVING DOOR GLAZING MATERIALS, PERIMETER CAULKING (INCLUDING BASE SECTION TO FLOOR) AND CANOPY COVER CAULKING NOT BY CRANE. ALL HOLES IN FLOOR NOT BY CRANE.  
**MATERIAL TO BE:**  
MINIMUM .060 THICKNESS STAINLESS STEEL 304 ALLOY. (CANOPY & ENCLOSURE)  
MINIMUM .036 THICKNESS STAINLESS STEEL 304 ALLOY. (CLAD WINGS)  
EXTRUDED ALUMINUM OF 6063-T6 ALLOY. (UNLESS OTHERWISE SPECIFIED)  
**FINISH TO BE:**  
CRANE STANDARD #4 SATIN  
**GLASS TO BE:** CLEAR  
1/4\"/>



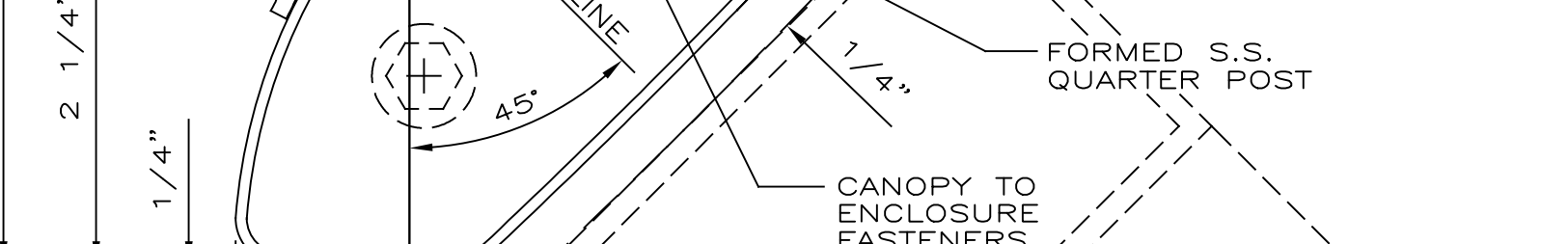
**HARDWARE SCHEDULE**

- OVERHEAD MANUAL SPEED CONTROL UNIT.
- FLOOR MOUNTED PIVOT BEARING ASSEMBLY.
- FULVIEW II PANIC PROOF BOOK-FOLD MECHANISM IN COMPLIANCE WITH ALL APPLICABLE REGULATIONS.
- LOCKS: SPECIAL REV. DOOR TYPE TWO (2) REQUIRED INSTALLED AT TOP RAILS OF TWO ADJACENT WINGS FOR INTERIOR LOCKING.
- CYLINDERS: STANDARD SIZE MORTISE TYPE, TWO (2) REQUIRED PER REV. DOOR UNIT, TO BE SUPPLIED BY OTHERS.
- PUSH BARS: 1\"/>

**INSTALLER NOTE:**  
BOOK-FOLD TENSION IS NOT PRESET; IT MUST BE ADJUSTED TO MEET BUILDING CONDITIONS.



**TYPICAL CYLINDER AND \"STRAIGHT ARM\" TYPE CAM REQUIRED FULL SIZE**  
NOTE: ADAMS-RITE CAM MAY BE SUBSTITUTED



**GENERAL CONTRACTOR NOTE:**  
GENERAL CONTRACTOR TO PROVIDE A #6\"/>

**GENERAL NOTES**  
CONTRACTOR SHOULD CHECK & TAKE NOTE OF ALL DIMENSIONS AS CRANE (CRANE REVOLVING DOOR) ASSUMES NO RESPONSIBILITY BEYOND MANUFACTURING IN ACCORDANCE WITH THE DIMENSIONS SHOWN ON SHOP DRAWINGS.  
APPROVAL INDICATES THAT THIS SHOP DRAWING HAS BEEN CHECKED AND THAT YOU AUTHORIZE US TO FABRICATE MATERIALS AS SHOWN HERE-IN.  
REVOLVING DOOR GLAZING MATERIALS, PERIMETER CAULKING (INCLUDING BASE SECTION TO FLOOR) AND CANOPY COVER CAULKING NOT BY CRANE. ALL HOLES IN FLOOR NOT BY CRANE.  
**MATERIAL TO BE:**  
MINIMUM .060 THICKNESS STAINLESS STEEL 304 ALLOY. (CANOPY & ENCLOSURE)  
MINIMUM .036 THICKNESS STAINLESS STEEL 304 ALLOY. (CLAD WINGS)  
EXTRUDED ALUMINUM OF 6063-T6 ALLOY. (UNLESS OTHERWISE SPECIFIED)  
**FINISH TO BE:**  
CRANE STANDARD #4 SATIN  
**GLASS TO BE:** CLEAR  
1/4\"/>

PRIOR TO FABRICATION, SHOP DRAWINGS AND SAMPLES MUST BE FULLY APPROVED AND RETURNED TO DORMAKABA.

**Crane dormakaba**

PHONE: 717-335-8722 | DORMA DRIVE REAMSTOWN, PA 17567

PROJECT TITLE: **ATTACHMENT PLAN "A"**

|                     |                            |
|---------------------|----------------------------|
| LOCATION:           | PLEASE ADVISE              |
| ARCHITECT:          | PLEASE ADVISE              |
| GENERAL CONTRACTOR: | PLEASE ADVISE              |
| SUB. CONTRACTOR:    | PLEASE ADVISE              |
| HQS. REP.:          |                            |
| DRAWN BY: JG        | MODEL NUMBER / DOOR NUMBER |
| SCALE: AS SHOWN     | SS2000-M                   |
| CHECKED BY: BKA     |                            |
| DATE: 01/04/22      | SHEET: 1 OF 1              |
| REVISIONS:          | DRAWING NO.: XXXX          |